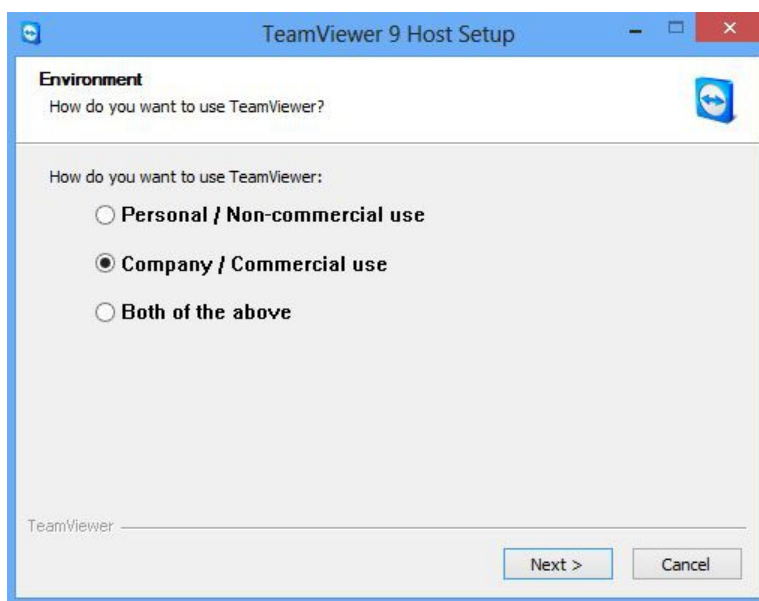
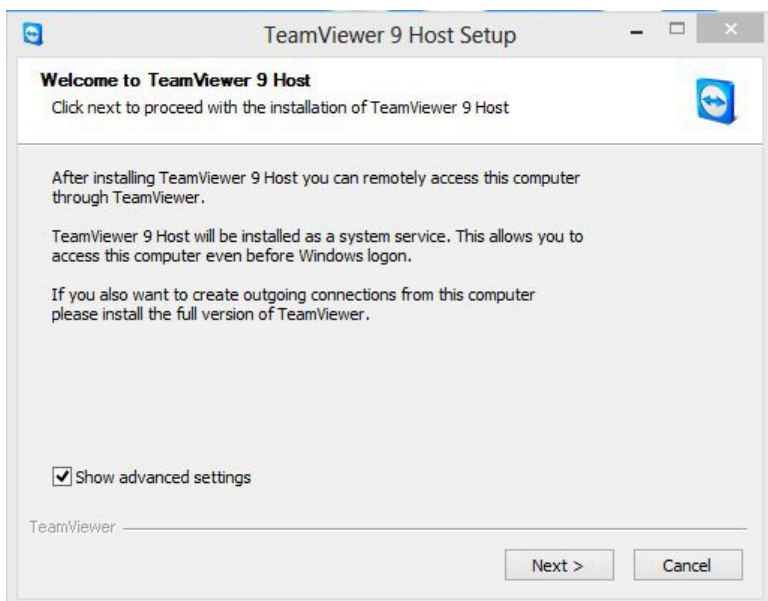
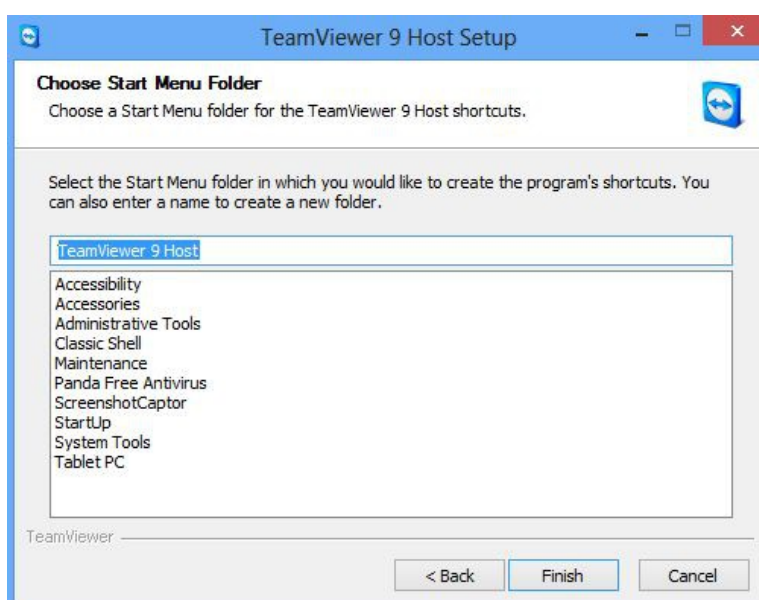
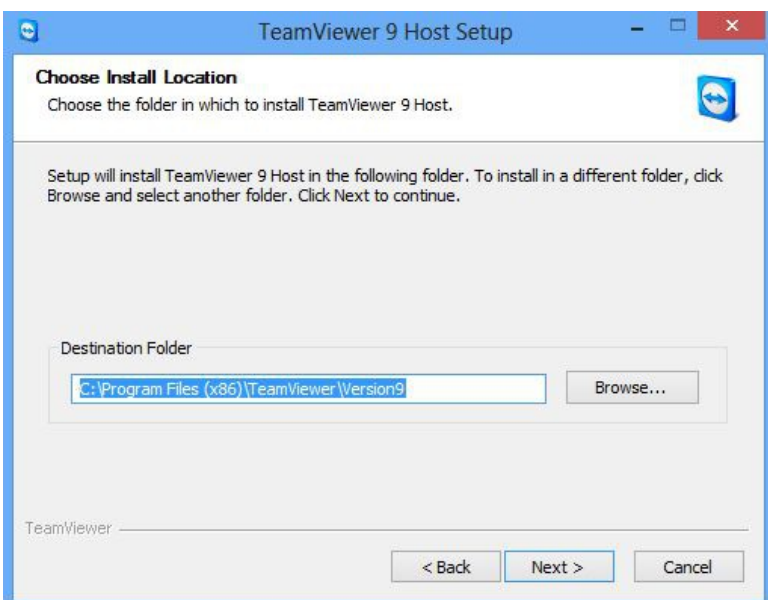
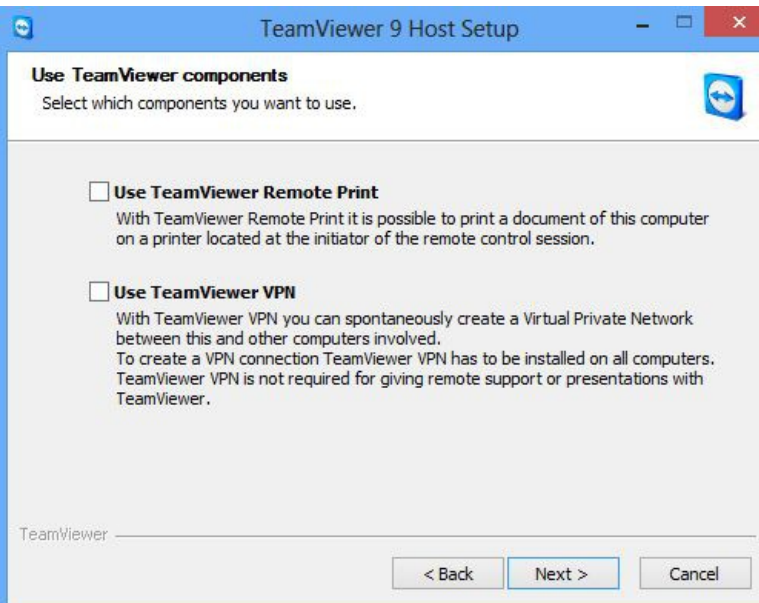
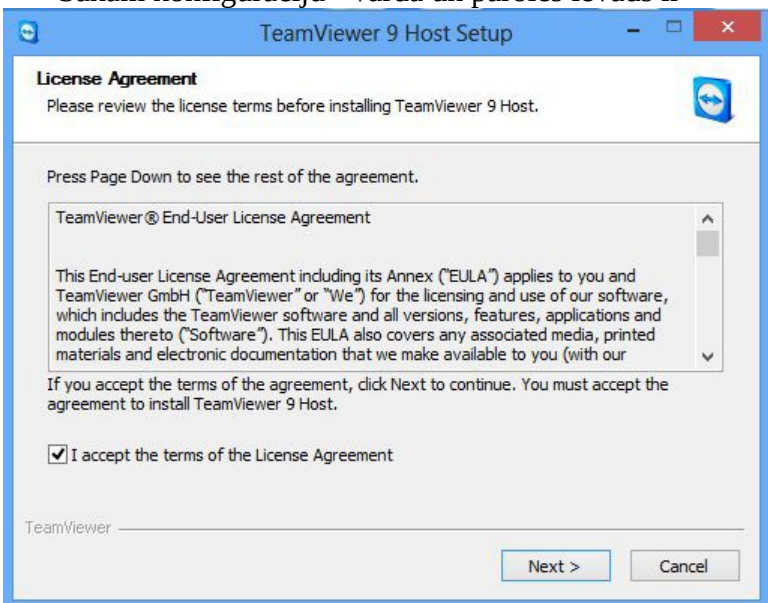


Pēc tam, kad palaists TeamViewer, jūs redzēsiet šādas bildes – uzstādiet visu precīzi kā norādīts bildēs zemāk, katru reizi nospiežot pogu «Next >>»

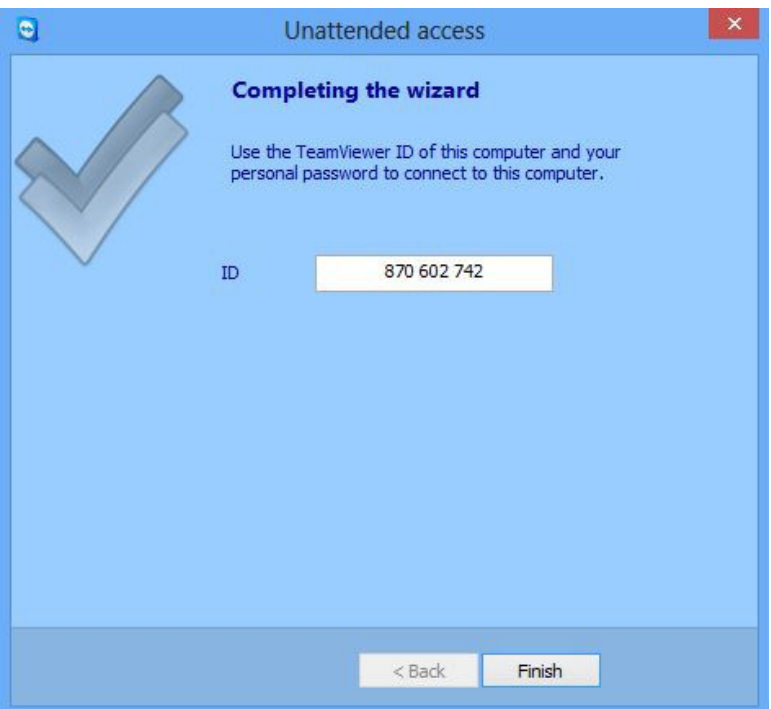
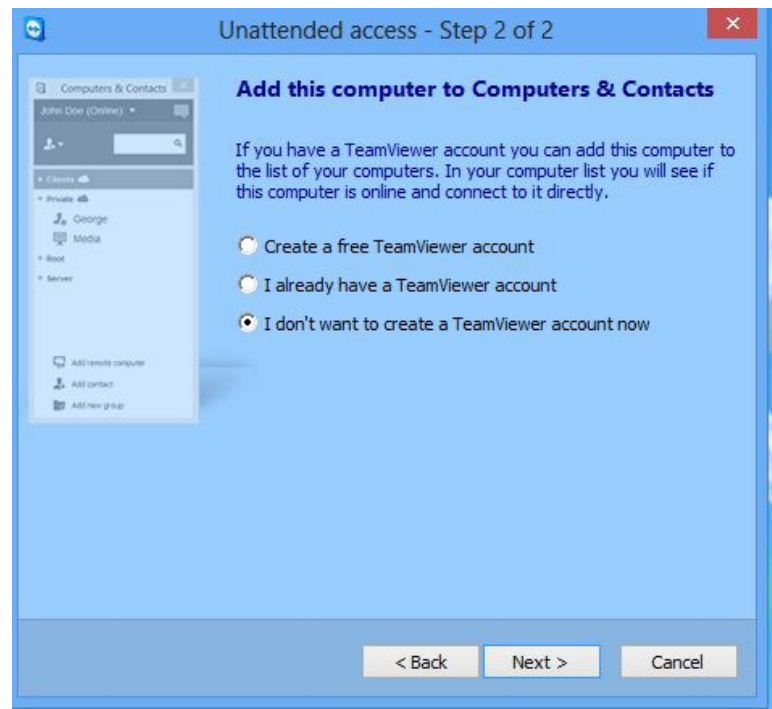
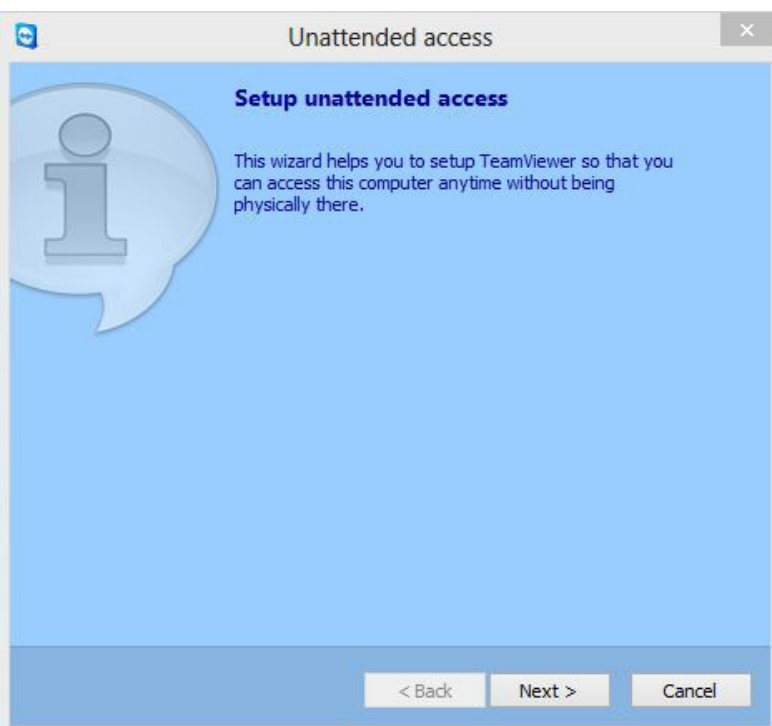


Sākam konfigurāciju - vārda un paroles ievads ir



sekojošs:

Computer name → TEST
Password → 1111
Confirm password → 1111



Pēc uzstādīšanas un konfigurācijas nepieciešams paziņot speciālistam identifikācijas numuru (ID), šajā piemērā, ID 870602742